



CONSUL

open participation

Open Software for Citizen Participation



What is Consul?

Consul is the most comprehensive digital tool for citizen participation, enabling an open, transparent and democratic government.

Over 50 institutions around the world jointly developed the platform. They share and exchange experiences, best practices and knowledge. With their input, Consul is constantly expanding and improving.

It's an open software platform so any institution can use and modify it as they see fit, for free.

Why Consul?

Consul is the only tool that accommodates any kind of participative processes currently managed by institutions from all over the world: citizens' proposals, debates, participatory budgeting, collaborative legislation, interviews and surveys, voting, etc. It has the added advantage of being customisable for any specific need, no matter what the size of the institution.

Benefits

With Consul, you can:

- Set up any type of participation process used by governments around the world
- Allow citizens to participate in the most important and day-to-day decisions of institutions
- Put in place participation initiatives quickly and efficiently, with hardly any extra resources
- Adapt the participation processes to the needs of each institution
- Learn from the experience of all the other institutions that use Consul
- Adapt, improve and propose new developments that could benefit all the Consul Community members

Advantages

- Free**
As it is an open software platform all its code can be used by any person or entity
- Customisable**
Any entity can freely modify it to suit its requirements
- Continuously being updated**
Consul customers can suggest improvements, new features and functionalities to ensure its evolution
- Rich functionality**
Citizens can easily participate at different levels
- Secure**
It features a registration system that protects privacy. It can be integrated with existing register and census systems
- Adaptive design**
It can be used across all web browsers and mobile devices
- Efficient**
Thanks to its powerful administration interface even very small teams can easily manage complex participation processes
- On-going support**
From the technical and development teams, as well as insight from other institutions that are using it across the world.

What can you do with Consul?

Consul can easily be adapted to the needs of any institution. Here are some of the ways of participating that it can facilitate:

Citizens' Proposals

Anybody can submit a proposal to improve their city. Others can support the proposal, and if a certain threshold is reached, the proposal can then be put to vote.

Participatory Budgeting

Citizens can propose and decide how part of the Government's Budget is spent.

Collaborative Legislation

People can actively participate in preparing legislation and action plans - whether in debates, prioritizing measures, or commenting on specific texts.

Debates

Anybody can start a discussion thread and create an independent area where topics can be debated.

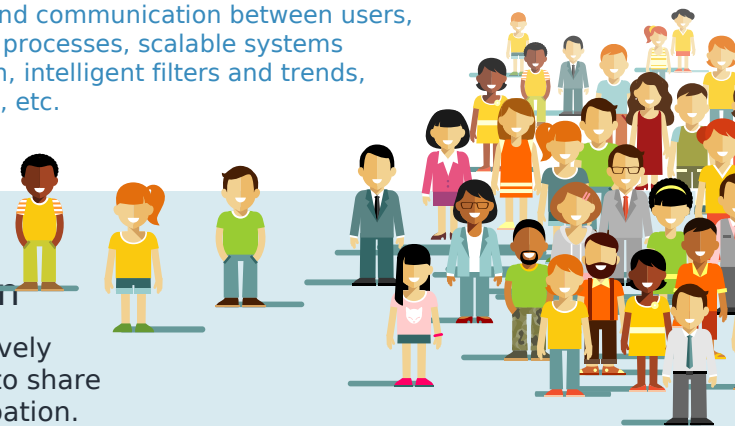
Voting

Voting is possible for both citizens' and institutions proposals. In addition, voting can be activated for all of a territory, or just certain zones or areas.

It also has many other interesting features: user verification to avoid duplicate votes, loading of paper signatures, management of physical votes, notifications and communication between users, full configuration of the parameters and phases for the different processes, scalable systems for debates and commentary, categories, geographic localisation, intelligent filters and trends, multilingual capabilities, profiles for institutional representatives, etc.

Consul for institutions Transparency, efficiency and collaboration

Signing up for Consul is a great opportunity to cost-effectively collaborate with other governments and institutions, and to share ideas, experiences and projects to improve citizen participation.



Institutions that are part of the Consul community

Buenos Aires
La libertad
Mendoza
Jalisco
Guadalajara
Guatemala
Montes de Oca
Barú
Bogotá
Nariño
Quito
Cuenca
Lima
Godoy Cruz
Córdoba
Río Cuarto
Tigre
Porto Alegre
Puerto Montt
Montevideo

Madrid
París
Roma
Turín
Valencia
La Coruña
Zamora
Valladolid
Oviedo
Castellón
Carreño
Calviá
Molina de Segura
Chiloeches
Benalmádena
Getafe
Zamora
Sitges
U. Complutense
Valdemorillo

Ciempozuelos
Tarragona
Palma de Mallorca
Cádiz
Toledo
Alicante
Golmavo
Huesca
Consejo Insular de Mallorca
Dip. de Valencia
Buñol
Arona
Cabildo Insular de Gran Canaria
Talamaca de Jarama
S. Sebastián de los Reyes